

Syringe Kits and Accessory

Syringe Kits (For SinoPower-S)

Product code	7.20.01.0013
Size	200mL
Standard configuration	Includes 1 piece of 200 mL sterile syringe, 1 piece of J type fill tube, 1 piece of I type spiral connection tube



Syringe Kits (For SinoPower-D)

Product code	7.20.01.0014
Size	200mL
Standard configuration	Includes 2 piece of 200 mL sterile syringe, 2 piece of J type fill tube, 1 piece of Y type spiral connection tube



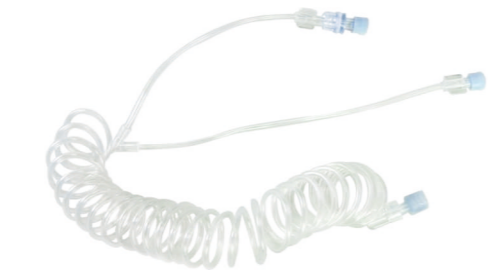
I Type Connection Tube (Pressure limit: 300 PSI)

Product code	7.20.03.0011	7.20.03.0012
Size	1500mm	1500mm
Standard configuration	1 piece of spiral connection tube (Without one-way valve)	1 piece of spiral connection tube (With one-way valve)



Y Type Connection Tube (Pressure limit: 300 PSI)

Product code	7.20.03.0013	7.20.03.0014
Size	1500mm	1500mm
Standard configuration	1 piece of spiral connection tube (With 1 one-way valve)	1 piece of spiral connection tube (With 2 one-way valve)



T Type Connection Tube (Pressure limit: 300 PSI)

Product code	7.20.03.0015	7.20.03.0016
Size	1500mm	1500mm
Standard configuration	1 piece of spiral connection tube (With 1 one-way valve)	1 piece of spiral connection tube (With 2 one-way valve)



Syringe Kits (For SinoAngio-1200/600)

Product code	7.20.01.0032
Size	150mL
Standard configuration	Includes 1 piece of 150 mL sterile syringe 1 piece of J type fill tube



I Type Connection Tube for DSA Injector (Pressure limit: 1200 PSI)

Product code	7.20.03.0007
Size	1200mm
Standard configuration	1 piece of 1200 mm transparent high-pressure connection tube (With 1 Luer taper)



Fill Tube

Product code	7.20.03.0026	7.20.03.0027
Size	100mm	100mm
Standard configuration	1 piece of 500 mm J type fill tube	1 connection tube (Fill tube) 1 end with long spike



Contrast Media Injectors (For CT and DSA Series)

Sino Medical-Device Technology Co., Ltd.

Add: 6th Floor, Building 15, No.1008, Songbai Road, Nanshan District, Shenzhen, P.R. China

Tel: +86 755 26755692 Fax: +86 755 26755687 Zip: 518055

Email: info@sinomdt.com

www.sinomdt.com | Hotline: (+86)4008 860121

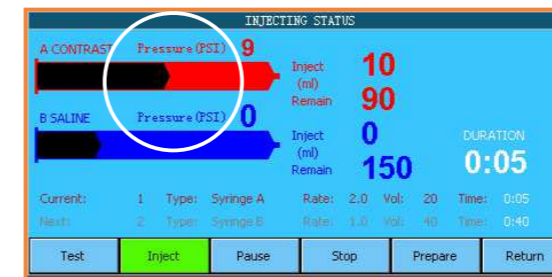
SinoPower series

| CT Injectors

SinoPower



Unique design of **"Direct Pressure Sensor"** protect patient
(Patent No.: ZL200920129005.9)



- Real-time injection pressure display
- When the actual pressure exceeds the limit, the system will automatically stop injection and give alarm
- Effectively reduce the swelling caused by vascular rupture (See the application case)

Local & remote real **color LCD** touch screen display



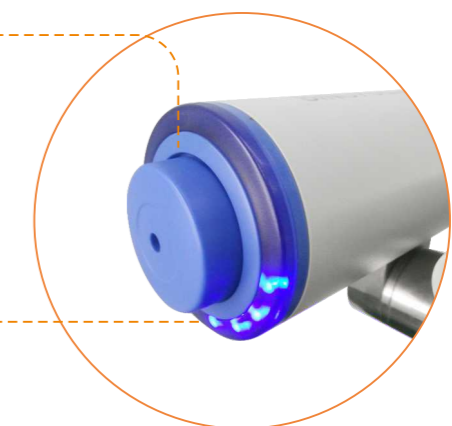
- Remote console: able to edit the protocols and execution of injection, synchronous display of all operations of the local console
- Local console: all actions can be performed, and synchronous display of all operations of the remote console.

Manual operate knob

- Syringe contrast media suction and air exhaust
- Small test injection

LED rotation indicator

- LED clockwise rotation show the drug suction process
- LED counter clockwise rotation show the injection process



SinoPower-D

SinoPower-S

SinoPower-S100



Local emergency stop button

- For the emergency, immediately stop the machine and prevent damage

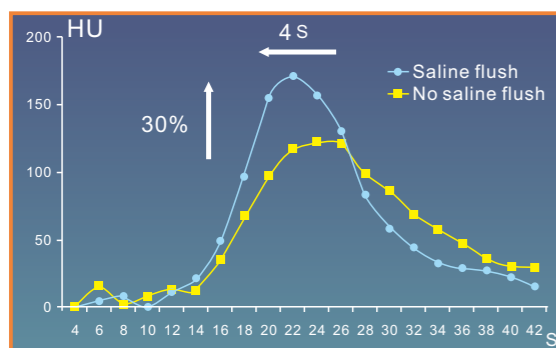


Large handhold and large wheel

- Easy to move and easy to fix the injector



Dual syringe injection, support saline flush function (SinoPower-D)



- Saline flush reduce the fake image and get better enhancement, improve the image quality

Syringe Heater (Optional)

- Heat the contrast media and saline, making the injection process more comfortable



Specifications of CT High-Pressure Injector

Model	SinoPower-S	SinoPower-D	SinoPower-S100
Syringe	Single syringe	Dual syringe	Single syringe
Size of syringe	200mL sterile syringe for high-pressure injector		100mL push rod cylinder syringe
Pressure limit	50 Psi ~300Psi		50 Psi ~200Psi
Flow rate	0.1ml/s~10.0ml/s Step: 0.1mL/s		0.1ml/s~10.0ml/s Step: 0.1mL/s
Injection volume	0.1mL ~ Volume of syringe		
Injection delay	0~600s		
Injection phases	1~8 phases		
Injection protocol	Up to 120 protocols		
Control console	7 inch real color touch LCD for both local and remote		
Syringe heater	35°C±5°C (≥40min)		

Patented technology to protect patient

-Application of SinoPower High-pressure Injector

Patented technology of 'Direct Pressure Sensor' to monitor real-time injection pressure, the injector will give alarm and stop injection when the pressure is abnormal, effectively reduce the swelling caused by vascular rupture to protect patient

The application of SinoPower-D High-pressure Injector in Sun Yat-sen Memorial Hospital

The Sun Yat-sen Memorial Hospital is an internationally well-known hospital with long history. In early February 2009, a SinoPower-D CT Injector was brought into use in the radiology department working with Siemens Sensation 64 CT. After being put in use, the new equipment has shown outstanding performance. The doctors and nurses responsible for on-site operation highly praise it: " SinoPower CT Injector is very safe, convenient and stable in use, having excellent clinical performance!"



Unique and patented technology of 'Direct Pressure Sensor', avoid medical accident caused by leakage of liquid

Enhanced Scan Injection has some risks in clinical use, if the needle hole moves away from blood vessel or the blood vessel is ruptured, the liquid will percolate through the skin to cause severe swelling and even fester. Fortunately, the SinoPower-D High can perceive real-time injection pressure, once the pressure exceeds limit extremely, the injector will give alarm and stop injection immediately to greatly reduce swelling and avoid accident.

Oneday, when making enhanced scan on a girl from Foshan, liquid leakage and swelling happened due to the needle was a little away from the blood vessel, as the girl's blood vessel is a little bit narrow. SinoPower-D High injector successfully detected abnormal pressure and stopped injection immediately, a medical accident was avoided. Afterwards, the on-site doctor said: "Thanks to the machine, an accident is avoided in time, otherwise the consequence will be terrible."

Powerful functions and stable working

This CT department is very busy, more than 80 enhanced scan will be done per day sometime. In the peak time, there is case every 4-5 minutes, which covers scan of ordinary organs and brain. With so frequent use, SinoPower-D injector still works well all the time. During the 7 years after being put in use, several tens of thousands injections were finished without any problems, even under so intensive, long time and continuous use.

SinoAngio series

DSA Injectors



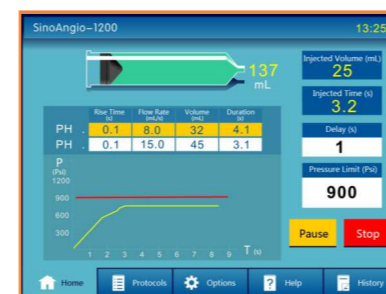
SinoAngio



SinoAngio



With unique "Direct Pressure Sensor" technology



- The machine display high sensitive real-time pressure curve, compared to the traditional current detection, the pressure detection is more accurate and more real-time
- Real-time pressure display, when the actual pressure exceeds the limit, the system will automatically slow down
- When the actual pressure exceeds the limit, the system will immediately stop injection and give alarm

Perfect display quality



- 12.1 inch color LCD control display, large visual angle, graphic interface

External SD card memory Hand switch/Foot switch Syringe heater (Optional)

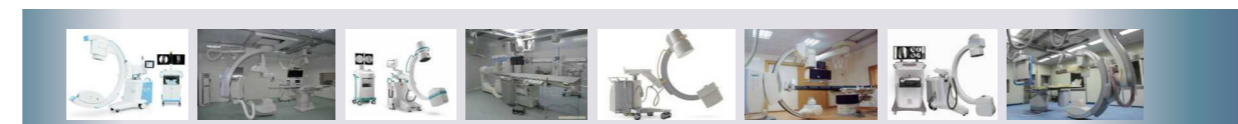
- Easy to copy and backup data
- Easy to upgrade



- Hand switch and foot switch can directly control the start / stop injection, convenient and quick

- Heat the contrast media and saline, making the injection process more comfortable

Support connection with multi brands of DSA



Specifications of DSA High-Pressure Injector

Model	SinoAngio-1200	SinoAngio-600
Syringe	Single syringe	
Size of syringe	150mL sterile syringe	
Injection volume	0.1mL ~ Volume of syringe	
Injection delay	0~600 S	
Injection phases	1~8 phases	
Injection protocol	Up to 120 protocols	
Syringe heater	35°C±5°C (≥40min)	
Tilt lockout	Rotate head to arm-down, minimize risk of air embolism	
Control console	12.1 inch real color touch LCD for both local and remote (Remote is optional)	
ISI	Synchronization of injection delay and scanning delay	
Pressure limit	100 ~1200 Psi	100 ~600 Psi
Flow rate	0.1mL/s~50.0mL/s	0.1mL/s~25.0mL/s
	Step: 0.1mL/s for 0.1mL/s≤X≤10.0mL/s 1mL/s for 10mL/s<X≤50.0mL/s	Step: 0.1mL/s for 0.1mL/s≤X≤10.0mL/s 1mL/s for 10mL/s<X≤25.0mL/s